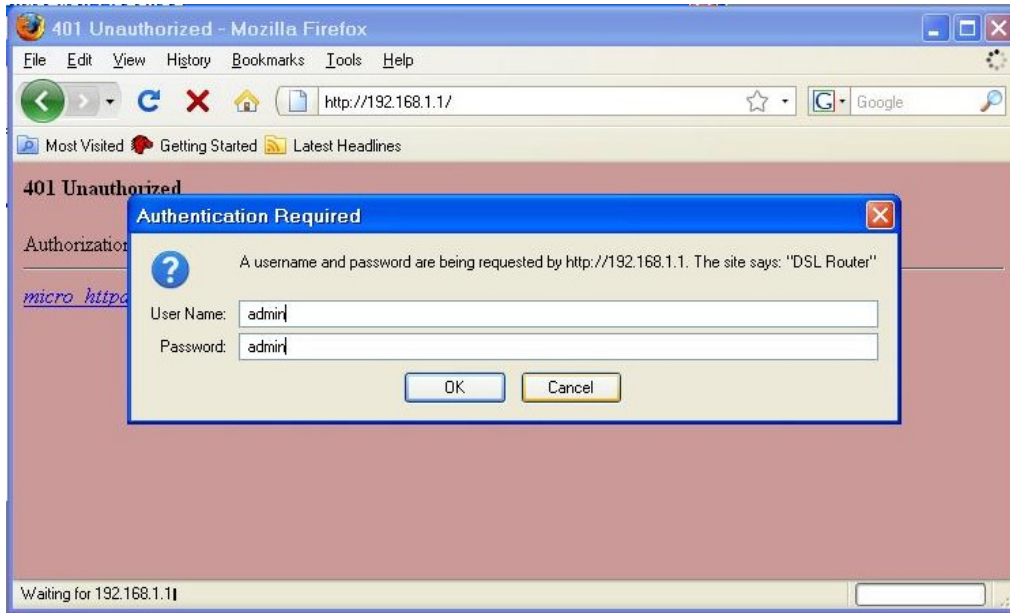


HƯỚNG DẪN CẤU HÌNH

Modem Bluecom Bcom-5370

Mở trình duyệt web. Nhập địa chỉ **192.168.1.1**, nhập username và password : **admin** , bấm nút **OK**



BCOM-5370 ADSL 2/2+ MODEM ROUTER + 1 PORT + USB PORT

Port/Vpi/Vci	VLAN Mux	Con. ID	Category	Service	Interface	Protocol	Igmp	QoS	State	Remove	Edit
0/0/33	Off	1	UBR	pppoe_0_0_33_1	ppp_0_0_33_1	PPPoE	Disabled	Disabled	Enabled	<input checked="" type="checkbox"/>	Edit

Add Remove Save/Reboot

3
Chọn Advanced Setup / WAN - đánh dấu ô Remove và bấm Remove

Bấm nút Add



BCOM-5370 ADSL 2/2+ MODEM ROUTER + 1 PORT + USB PORT

Device Info
Quick Setup
Advanced Setup
WAN
LAN
NAT
Security
Quality of Service
Routing
DNS
DSL
Port Mapping
Diagnostics
Management

Wide Area Network (WAN) Setup

Choose Add, Edit, or Remove to configure WAN interfaces.
Choose Save/Reboot to apply the changes and reboot the system.

Port/Vpi/Vci	VLAN Mux	Con. ID	Category	Service	Interface	Protocol	Igmp	QoS	State	Remove	Edit
--------------	----------	---------	----------	---------	-----------	----------	------	-----	-------	--------	------

Bấm nút ->

Device Info
Quick Setup
Advanced Setup
WAN
LAN
NAT
Security
Quality of Service
Routing
DNS
DSL
Port Mapping
Diagnostics
Management

ATM PVC Configuration

This screen allows you to choose your ISP from drop-down list in ISP Mode and then the relevant PVC will automatic appear for it. Otherwise choose an existing interface by selecting the checkbox to enable it.

ISP Mode:

 PORT: [0-3]

 VPI: [0-255]

 VCI: [0-65535]

Chọn ISP Mode : SPT
PORT : 0
VPI : 0
VCI : 33

VLAN Mux - Enable Multiple Protocols Over a Single PVC

Service Category:

Enable Quality Of Service

Enabling packet level QoS for a PVC improves performance for selected classes of applications. QoS cannot be set for CBR and Realtime VBR. QoS consumes system resources; therefore the number of PVCs will be reduced. Use **Advanced Setup/Quality of Service** to assign priorities for the applications.

Enable Quality Of Service

Bấm

Device Info
Quick Setup
Advanced Setup
WAN
LAN
NAT
Security
Quality of Service
Routing
DNS
DSL
Port Mapping
Diagnostics
Management

Connection Type

Select the type of network protocol for IP over Ethernet as WAN interface

- PPP over ATM (PPPoA)
- PPP over Ethernet (PPPoE)
- MAC Encapsulation Routing (MER)
- IP over ATM (IPoA)
- Bridging

Encapsulation Mode

Device Info
Quick Setup
Advanced Setup
WAN
LAN
NAT
Security
Quality of Service
Routing
DNS
DSL
Port Mapping
Diagnostics
Management

PPP Username and Password

PPP usually requires that you have a user name and password to establish your connection. In the boxes below, enter the user name and password that your ISP has provided to you.

PPP Username:

PPP Password:

PPPoE Service Name:

Authentication Method:

Enable Fullcone NAT

Đánh dấu vào Enable Fullcone NAT

NAT

Các mục khác để theo mặc định

Firewall

Dial on demand (with idle timeout timer)

PPP IP extension

Use Static IP Address

Retry PPP password on authentication error

Enable PPP Debug Mode

Bridge PPPoE Frames Between WAN and Local Ports (Default Enabled)

Device Info
Quick Setup
Advanced Setup
WAN
LAN
NAT
Security
Quality of Service
Routing
DNS
DSL
Port Mapping
Diagnostics
Management

Enable IGMP Multicast, and WAN Service

Enable IGMP Multicast

Enable WAN Service

Service Name

- Device Info
- Quick Setup
- Advanced Setup
- WAN
- LAN
- NAT
- Security
- Quality of Service
- Routing
- DNS
- DSL
- Port Mapping
- Diagnostics
- Management

WAN Setup - Summary

Make sure that the settings below match the settings provided by your ISP.

PORT / VPI / VCI:	0 / 0 / 33
Connection Type:	PPPoE
Service Name:	pppoe_0_0_33_1
Service Category:	UBR
IP Address:	Automatically Assigned
Service State:	Enabled
NAT:	Enabled
Firewall:	Enabled
IGMP Multicast:	Disabled
Quality Of Service:	Disabled

Click "Save" to save these settings. Click "Back" to make any modifications.
NOTE: You need to reboot to activate this WAN interface and further configure services over this interface.

- Device Info
- Quick Setup
- Advanced Setup
- WAN
- LAN
- NAT
- Security
- Quality of Service
- Routing
- DNS
- DSL
- Port Mapping
- Diagnostics
- Management

Wide Area Network (WAN) Setup

Choose Add, Edit, or Remove to configure WAN interfaces.
Choose Save/Reboot to apply the changes and reboot the system.

Port/Vpi/Vci	VLAN Mux	Con. ID	Category	Service	Interface	Protocol	Igmp	QoS	State	Remove	Edit
0/0/33	Off	1	UBR	pppoe_0_0_33_1	ppp_0_0_33_1	PPPoE	Disabled	Disabled	Enabled	<input type="checkbox"/>	<input type="button" value="Edit"/>

Chọn Save / Reboot. Sau đó đợi 2 phút để modem đồng bộ với hệ thống

Lưu ý : không cần phải tắt modem hay máy tính, sau khi modem đồng bộ với hệ thống là đã vào mạng lại bình thường.

GOOK LUCK !

MỞ TÍNH NĂNG ADSL 2+

Đăng nhập vào modem, chọn **Advanced Setup** , chọn **DSL** , bỏ chọn tất cả các mode trong “ **Select the modulation below** “ chỉ chọn 2 mode **ADSL 2+** và **AnnexM**

Các mục còn lại để mặc định, bấm nút **Save / Apply** , sau đó vào lại **WAN** chọn **Save / Reboot**

Device Info
Quick Setup
Advanced Setup 1
WAN
LAN
NAT
Security
Quality of Service
Routing
DNS
DSL 2
Port Mapping
Diagnostics
Management

DSL Settings

Select the modulation below.

G.Dmt Enabled
 G.lite Enabled
 T1.413 Enabled
 ADSL2 Enabled
 AnnexL Enabled
 ADSL2+ Enabled chọn
 AnnexM Enabled

Select the phone line pair below.

Inner pair
 Outer pair

Capability

Bitswap Enable
 SRA Enable

3
Save/Apply Advanced Settings

© 2000-2006 Broadcom Corporation. All rights reserved.